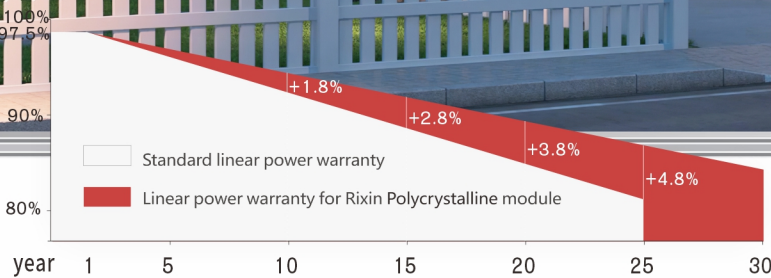
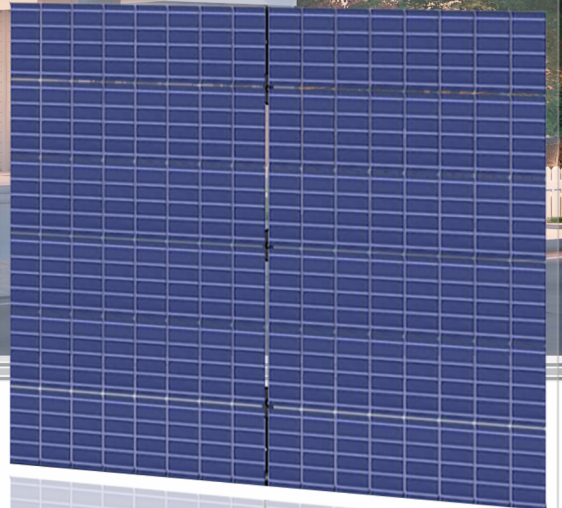


Launched for
intelligent & green buildings



Main Features



Building materials design idea

Designed as per green building materials idea
30-Year power output



Half-cut technology

Increase power output, reduce cracking risks,
improve module reliability



Intelligent safety guarantee

Module safety shutdown, power optimization and
monitoring functions



Reduce shading loss

Half-cut cell + intelligent optimization technology
Avoid the influence of shading, reduce the loss of power



Easy Installation

The module design is easy for installation and could
achieve a flat & full installation.

Product Certificates



Contact Us

Sales Hotline:

+86 27 87801237

Rixin Technology PV Industrial Park, No.6, Middle
Maodianshan Road, East Lake Development Zone,
Wuhan, Hubei, China

www.rixinsolar.com

Electrical performance parameters

Model	MDN225	MDN230	MDN235
Maximum power (Pm/Wp)	225	230	235
Maximum power voltage (Vmp/V)	25.3	25.4	25.5
Maximum power current (Imp/A)	8.9	9.05	9.20
Open circuit voltage (Voc/V)	30.05	30.15	30.25
Short circuit current (Isc/A)	9.98	10.08	10.18
Module efficiency (%)	16.7	17.05	17.4

Mechanical performance parameters

Cell Nos & array	Poly half-cut cells 96 (6*8*2)
Appearance color	dark blue
Cable	4mm ² , negative 1200mm, positive 1200mm
Module weight(kg)	15
Module dimension(L*W*H)(mm)	1360*992*5mm
Packing	33pcs/pallet

Quality parameters

Module working temperature range (°C)	-40~+85
Power tolerance (W)	0~+5
Maximum system voltage (V)	DC1500
System maximum protection current (A)	20
NOCT(°C)	45 ± 2
Front/rear static loads(Pa)	5400/2400
Protection grade of junction box	IP68

Temperature coefficient (STC)

Temperature coefficient of Voc	-0.31%/°C
Temperature coefficient of Isc	+0.05%/°C
Temperature coefficient of Pm	-0.41%/°C

Test condition: irradiance=(1+0.1BI(FI))1000W/m², ambient temperature=25°C, AM=1.5

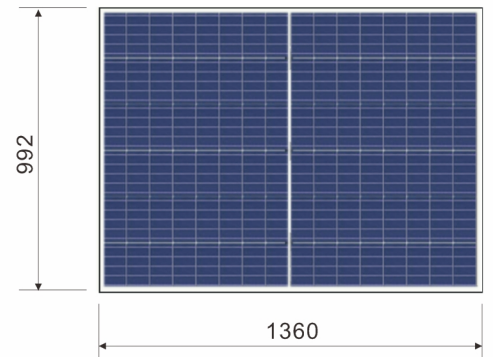
Quality warranty

10-year materials&workmanship warranty

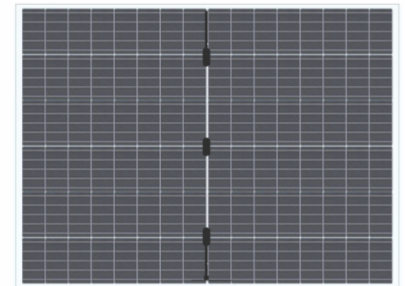
30-year linear power warranty

Attention:Read safety and installation instructions before using.
The parameters in this sheet are subject to change without prior notice.

Module dimension (mm)



Front side



Back side

I-V curve(230W)

