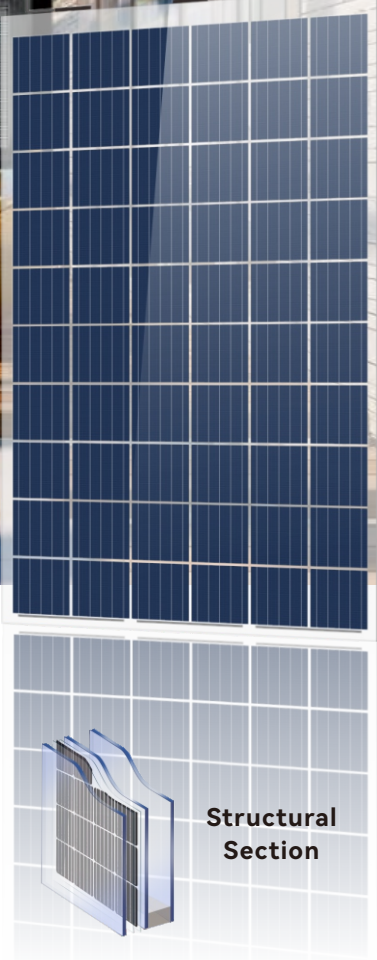
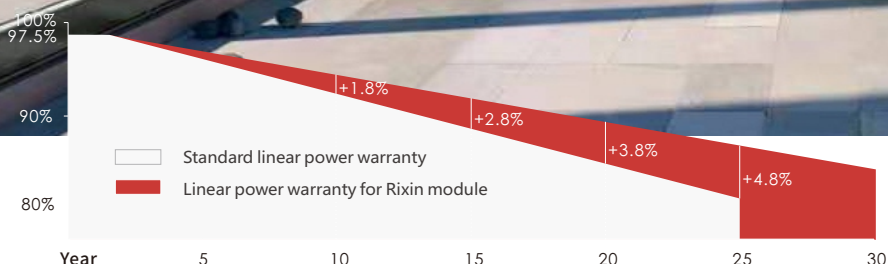




# Polycrystalline Hollow Glass Solar Module RXZK-MDM270



## Main Features



### Building Material Safety Standards

Design as per Green Building Material Standards



### Safety

With high yield of impact resistance, wind pressure and snow pressure resistance 5400Pa.



### Extra Power Generation

Over 30 years of power generation guarantee and as low as 0.5% power attenuation per year.



### Sound Insulation & Heat Insulation

Wide range of applications.  
Replacement of common glass materials such as sun rooms, skylights, carports, sound insulation panels and etc.



### Easy Installation

Easy installation with modular design.  
Easy to be fully flat deployed.

## Certificates



## Contact Us

Tel :+86 27 87801237

Email : info@rixinsolar.com



www.rixinsolar.com.cn

## Electrical Performance Parameters

Model	RXZK-MDM270
Maximum power (Pm/Wp)	270
Maximum power voltage (Vmp/V)	31.84
Maximum power current (Imp/A)	8.48
Open circuit voltage (Voc/V)	38
Short circuit current (Isc/A)	9.35
Module efficiency (%)	14.4%

## Mechanical Performance Parameters

Fault Structure	5Low iron tempered glass+0.76PVB +Polysilicon Cell +0.76PVB+5Toughened glass+9A+5Toughened glass
Cable	4mm <sup>2</sup> /900mm
Module weight(kg)	70
Module dimension(L*W*H)(mm)	1775*1060*26mm
Resistance to wind pressure	2.4kN/m <sup>2</sup>

## Quality Parameters

Module working temperature range (°C)	-40~+85
Power tolerance (W)	0~+5
Maximum system voltage (V)	DC1500
System maximum protection current (A)	20
NOCT(°C)	45±2
Front/rear static loads(Pa)	5400/5400
Protection grade of junction box	Ip68, split/MC4 compatible

## Temperature Coefficient (STC)

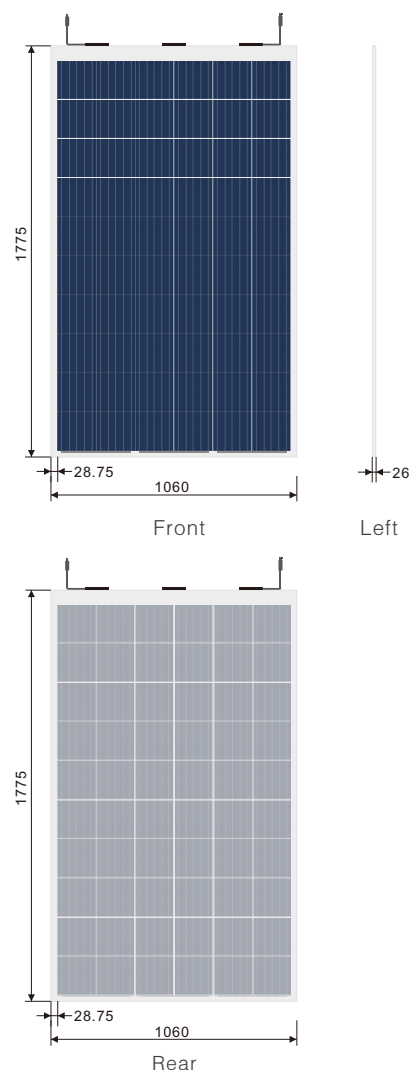
Temperature coefficient of Voc	-0.31%/°C
Temperature coefficient of Isc	+0.05%/°C
Temperature coefficient of Pm	-0.41%/°C

Test condition: irradiance=(1+0.1BiFi) 1000W/m<sup>2</sup>, ambient temperature=25°C, AM=1.5

## Quality Warranty

10-year material & workmanship warranty
30-year linear power warranty
Attention:Read safety and installation instructions before using.
The parameters in this sheet are subject to change without prior notice.

## Module Dimension (mm)



## I-V Curve(270W)

